

TAMPA HILLSBOROUGH
EXPRESSWAY AUTHORITY

CONTRACT PLANS

INDEX OF ROADWAY PLANS

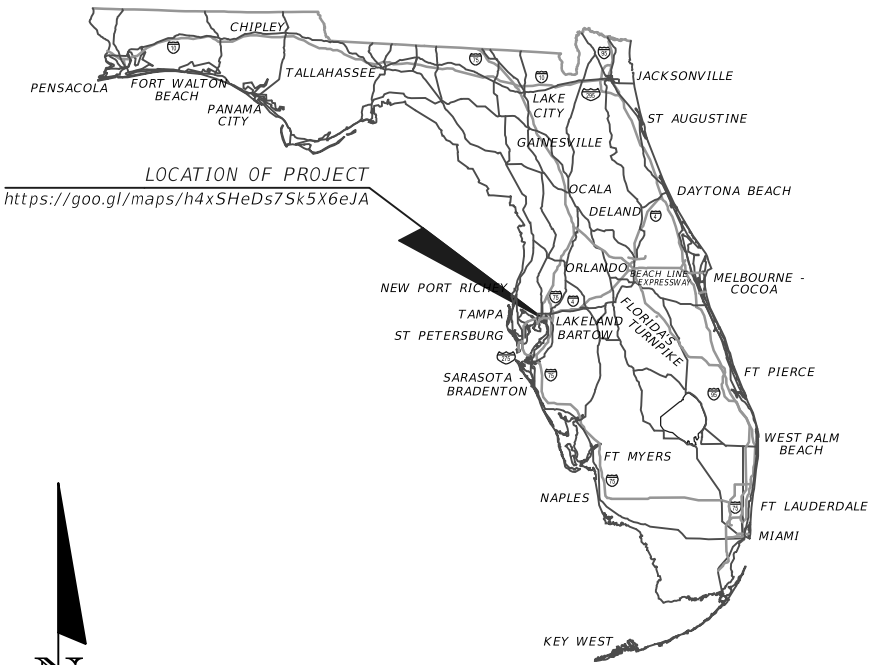
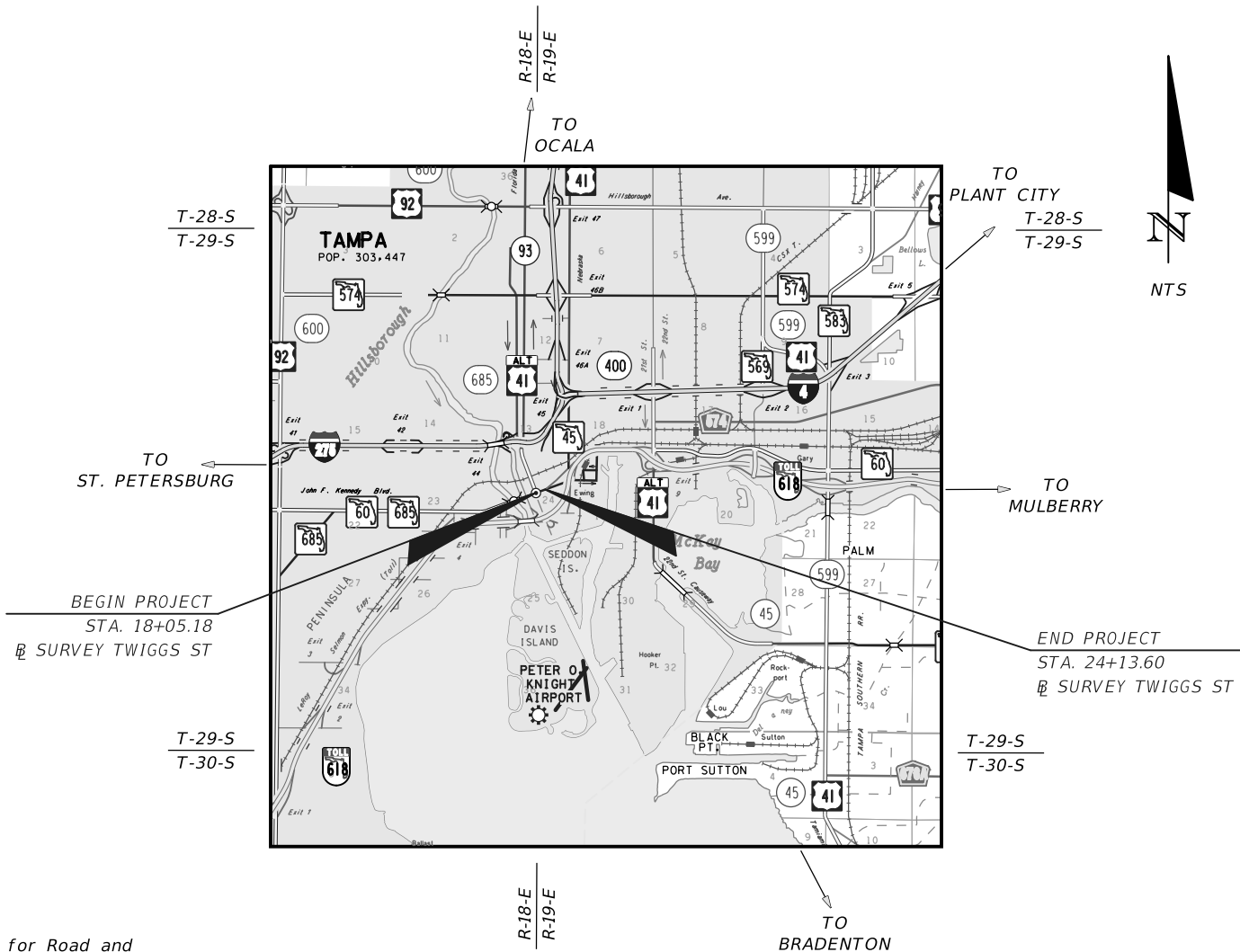
SHEET NO.	SHEET DESCRIPTION
1	KEY SHEET
2	SIGNATURE SHEET
3	GENERAL NOTES
UTV-1 - UTV-2	VERIFIED UTILITY LOCATE SHEET
4 - 7	UTILITY ADJUSTMENT TYPICAL SECTION* ROADWAY PLAN*

* PLAN SHEETS PROVIDED FOR INFORMATION ONLY

PROJECT ID: O-00419

HILLSBOROUGH COUNTY (10002)

E. TWIGGS STREET UTILITY ADJUSTMENTS



GOVERNING STANDARD PLANS:

Florida Department of Transportation, FY2018/19 Standard Plans for Road and Bridge Construction and applicable Interim Revisions (IRs).

Standard Plans for Road Construction and associated IRs are available at the following website: <http://www.fdot.gov/design/standardplans>

GOVERNING STANDARD SPECIFICATIONS:

Florida Department of Transportation, July 2018 Standard Specifications for Road and Bridge Construction at the following website: <http://www.fdot.gov/programmanagement/Implemented/SpecBooks>

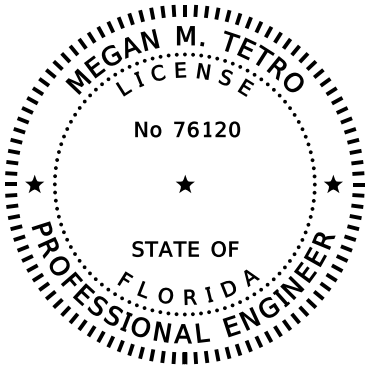
ROADWAY PLANS
ENGINEER OF RECORD:

MEGAN M. TETRO, P.E. NO.: 76120
WANTMAN GROUP, INC.
3111 W. DR. MARTIN LUTHER KING JR. BLVD.,
SUITE 375, TAMPA, FL 33607
(813) 574-3190
CERTIFICATE OF AUTHORIZATION NO.: 6091

THEA PROJECT MANAGER:

DAVID MAY, P.E.

CONSTRUCTION CONTRACT NO.	FISCAL YEAR	SHEET NO.
		1



THIS ITEM HAS BEEN DIGITALLY
SIGNED AND SEALED BY:

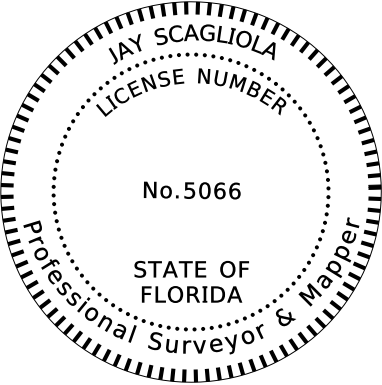
ON THE DATE ADJACENT TO THE SEAL

PRINTED COPIES OF THIS DOCUMENT ARE
NOT CONSIDERED SIGNED AND SEALED.
THE SIGNATURE MUST BE VERIFIED ON
ANY ELECTRONIC COPIES.

WANTMAN GROUP, INC.
3111 W. DR. MARTIN LUTHER KING JR. BLVD.
SUITE 375, TAMPA, FL 33607
CERTIFICATE OF AUTHORIZATION NO. 6091
MEGAN M. TETRO, PE NO. 76120

THE ABOVE NAMED PROFESSIONAL ENGINEER SHALL BE RESPONSIBLE FOR THE
FOLLOWING SHEETS IN ACCORDANCE WITH RULE 61G15-23.004, F.A.C.

SHEET NO.	SHEET DESCRIPTION
1	KEY SHEET
2	SIGNATURE SHEET
3	GENERAL NOTES
4 - 7	UTILITY ADJUSTMENT



THIS ITEM HAS BEEN DIGITALLY
SIGNED AND SEALED BY:

ON THE DATE ADJACENT TO THE SEAL

PRINTED COPIES OF THIS DOCUMENT ARE
NOT CONSIDERED SIGNED AND SEALED.
THE SIGNATURE MUST BE VERIFIED ON
ANY ELECTRONIC COPIES.

WANTMAN GROUP, INC.
2035 VISTA PARKWAY
WEST PALM BEACH, FL 33411
CERTIFICATE OF AUTHORIZATION NO. 7055
JAY SCAGLIOLA, PSM NO. 5066

THE ABOVE NAMED PROFESSIONAL SURVEY AND MAPPER SHALL BE RESPONSIBLE FOR THE
FOLLOWING SHEETS IN ACCORDANCE WITH RULE 5J-17.062, F.A.C.

SHEET NO.	SHEET DESCRIPTION
UTV-1 - UTV-2	VERIFIED UTILITY LOCATE SHEET

REVISIONS				MEGAN M. TETRO, P.E. FLORIDA PE NO. 76120 WANTMAN GROUP, INC. 3111 W. MARTIN LUTHER KING JR. BLVD., SUITE 375, TAMPA, FL 33607 CERTIFICATE OF AUTHORIZATION NO. 6091	TAMPA HILLSBOROUGH EXPRESSWAY AUTHORITY			SIGNATURE SHEET	SHEET NO.
DATE	DESCRIPTION		DATE		ROAD	COUNTY	CONTRACT NO.		
					TWIGGS	HILLSBOROUGH	000419		
									2

GENERAL NOTES:

1. EXISTING UTILITIES ARE TO REMAIN IN PLACE UNLESS OTHERWISE NOTED IN THE PLANS.
2. THE LOCATIONS OF UTILITIES SHOWN IN THE PLANS (INCLUDING THOSE DESIGNATED Vv, Vh, AND Vvh) ARE BASED ON LIMITED INVESTIGATION TECHNIQUES AND SHOULD BE CONSIDERED APPROXIMATE ONLY. THE VERIFIED LOCATIONS/ELEVATIONS APPLY ONLY AT THE POINTS SHOWN. INTERPOLATIONS BETWEEN THESE POINTS HAVE NOT BEEN VERIFIED.
3. UTILITY AGENCY/OWNERS:

COMPANY	CONTACT	TELEPHONE
BRIGHT HOUSE	MARK GIURBINO	813-436-2118
CENTURYLINK ENTERPRISE	LAMAR ISBELL	813-787-3913
CITY OF TAMPA TRANSPORTATION	BRIAN PASZKO	813-274-8105
CITY OF TAMPA WASTEWATER	JACK FERRAS	813-274-8095
CITY OF TAMPA WATER	KIMANI THOMAS	813-274-7391
CROWN CASTLE	DANNY HASKETT	786-610-7073
FIBERLIGHT	TIM GREEN	813-877-7183
FRONTIER	RANDALL JAMES	813-892-9692
HILLSBOROUGH COUNTY SHERIFFS OFFICE	ANTHONY C. GAY	813-290-2273
MCI/VERIZON BUSINESS/XO COMM.	SHAWN KAHLER	813-978-6542
SPRINT	JON BAKER	352-409-5095
TAMPA ELECTRIC	HEATHER LOVETT	813-275-3433
TECO PEOPLES GAS	TODD WEIDLEY	813-917-5635

REVISIONS				TAMPA HILLSBOROUGH EXPRESSWAY AUTHORITY			GENERAL NOTES	SHEET NO.
DATE	DESCRIPTION	DATE	DESCRIPTION					
				MEGAN M. TETRO, P.E. FLORIDA PE NO. 76120 WANTMAN GROUP, INC. 3111 W. MARTIN LUTHER KING JR. BLVD., SUITE 375, TAMPA, FL 33607 CERTIFICATE OF AUTHORIZATION NO. 6091	ROAD TWIGGS	COUNTY HILLSBOROUGH	CONTRACT NO. 000419	3

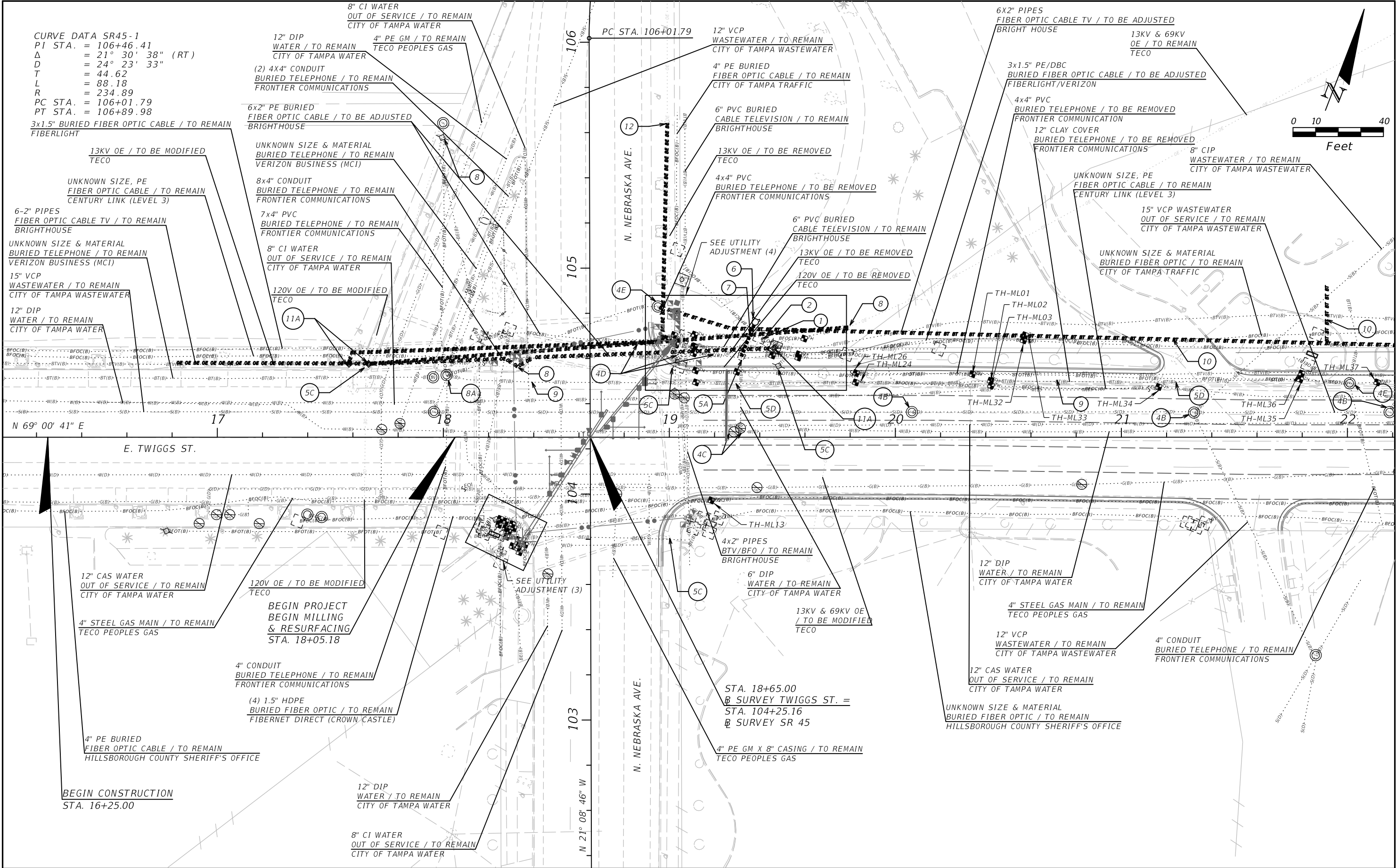
VERIFIED UTILITY LOCATE SHEET									
Vvh #	UTILITY DESCRIPTION (Owner, type)	SIZE	MATERIALS	B/L and/or C/L			EXISTING GROUND ELEVATION	TOP ELEVATION	COMMENTS
				STATION	OFFSET	LT/RT			
TH-ML01	FRONTIER COMMUNICATIONS, BURIED TELEPHONE	5x4"	PVC	20+34.1	27.9	LT	19.1	16.9	
TH-ML02	FRONTIER COMMUNICATIONS, BURIED TELEPHONE	12" DUCT	CLAY	20+42.2	25.0	LT	19.0	16.4	
TH-ML03	CENTURY LINK (LEVEL 3), BURIED FIBER OPTIC CABLE	UNK.	PE	20+42.3	22.8	LT	18.4	11.4	
TH-ML04	BRIGHTHOUSE, BURIED CABLE TELEVISION	2x2"	PVC	22+98.9	27.8	LT	18.6	17.2	
TH-ML05	FRONTIER COMMUNICATIONS, BURIED FIBER OPTIC TELEPHONE	6x4"	PVC	22+95.4	28.5	LT	18.6	16.0	
TH-ML06	CENTURY LINK (LEVEL 3), BURIED FIBER OPTIC CABLE	UNK.	PE	22+91.1	20.3	LT	17.7	11.3	
TH-ML07	FRONTIER COMMUNICATIONS, BURIED FIBER OPTIC TELEPHONE	6"x4"	PVC	19+11.6	29.5	LT	18.9	16.1	
TH-ML08	BRIGHTHOUSE, BURIED CABLE TELEVISION	6"	PVC	19+11.2	40.2	LT	19.4	17.3	
TH-ML09	FIBERLIGHT, BURIED FIBER OPTIC CABLE	3x1.5"	PE/DBC	19+10.7	40.2	LT	19.3	11.5	
TH-ML10	NO UTILITY FOUND, EXPLORATORY	N/A	N/A	19+10.8	37.1	LT	19.2	N/A	
TH-ML11	CITY OF TAMPA TRAFFIC, BURIED FIBER OPTIC CABLE	4"	PE	19+11.2	45.4	LT	19.5	12.2	
TH-ML12 NOT USED									
TH-ML13	FIBERNET DIRECT (CROWN CASTLE), BURIED FIBER OPTIC CABLE	UNK.	UNK.	19+18.5	27.9	RT	18.8	10.2	
TH-ML14 TO TH-ML19 NOT USED									
TH-ML20	FRONTIER COMMUNICATIONS, BURIED TELEPHONE	3x4"	PVC	22+51.1	27.7	LT	18.6	15.2	
TH-ML21	BRIGHTHOUSE, BURIED CABLE TELEVISION	2x2"	PVC	22+45.3	23.7	LT	18.4	13.6	
TH-ML22	CENTURY LINK (LEVEL 3), BURIED FIBER OPTIC CABLE	UNK.	PE	23+29.7	20.7	LT	18.3	11.4	COULD NOT SEE SIZE DUE TO A WATER TABLE
TH-ML23	BRIGHTHOUSE, BURIED CABLE TELEVISION	2x2"	PVC	23+37.0	27.7	LT	18.8	16.3	
TH-ML24	FRONTIER COMMUNICATIONS, BURIED TELEPHONE	8" DUCT	CLAY	19+82.5	24.3	LT	19.0	16.6	NORTH EDGE
TH-ML25	FRONTIER COMMUNICATIONS, BURIED FIBER OPTIC TELEPHONE	6x4"	PVC	19+29.8	29.0	LT	19.2	16.5	NORTH EDGE, TOTAL WIDTH ±16"
TH-ML26	BRIGHTHOUSE, BURIED CABLE TELEVISION	3x2"	PVC	19+82.6	28.4	LT	19.3	16.6	
TH-ML27	FRONTIER COMMUNICATIONS, BURIED TELEPHONE	8" DUCT	CLAY	19+11.8	24.3	LT	18.6	16.5	NORTH EDGE
TH-ML28	CENTURY LINK (LEVEL 3), BURIED FIBER OPTIC CABLE	UNK.	UNK.	19+45.6	36.2	LT	19.8	11.3	COULD NOT SEE SIZE AND MATERIAL DUE TO A WATER TABLE
TH-ML29	FIBERLIGHT, BURIED FIBER OPTIC CABLE	3x1.25"	PE	19+57.0	35.3	LT	19.5	16.0	
TH-ML30	CITY OF TAMPA TRAFFIC, BURIED FIBER OPTIC CABLE	2x4"	PVC	19+57.2	36.7	LT	19.7	17.5	
TH-ML31	CITY OF TAMPA TRAFFIC, BURIED FIBER OPTIC CABLE	4"	PVC	19+59.7	43.7	LT	20.4	12.6	
TH-ML32	FIBERLIGHT, BURIED FIBER OPTIC CABLE	3x1.25"	PE	20+56.7	42.9	LT	19.8	13.5	
TH-ML33	CITY OF TAMPA TRAFFIC, BURIED FIBER OPTIC CABLE	4"	PVC	20+57.3	45.2	LT	19.9	6.9	
TH-ML34	CITY OF TAMPA WATER, WATER MAIN	24"	CI	21+16.5	22.3	LT	18.5	12.6	POSSIBLE FIBER OPTIC LINE BELOW
TH-ML35	FRONTIER COMMUNICATIONS, BURIED FIBER OPTIC TELEPHONE	8x4"	PVC	21+79.1	25.6	LT	18.9	16.2	NORTH EDGE, TOTAL WIDTH ±2.5'
PROJECT LIMITS: E. TWIGGS ST. FROM N. NEBRASKA AVE. TO N. MERIDIAN AVE.									
SURVEYOR'S CERTIFICATION									
I HEREBY CERTIFY THIS SPECIFIC PURPOSE SURVEY WAS MADE FOR THE PURPOSE OF SURVEYING, REFERENCING, DESCRIBING AND MAPPING THE VACUUM EXCAVATION. TEST HOLES, AS MARKED ON THE SURFACE AND SURVEYED BY WGI INC. AND THAT MEETS THE STANDARDS OF PRACTICE SET FORTH BY THE FLORIDA BOARD OF PROFESSIONAL SURVEYORS AND MAPPERS IN CHAPTER 5J-17 FLORIDA ADMINISTRATIVE CODE PURSUANT TO SECTION 472.027 FLORIDA STATUTES. THIS MAP CONSISTING OF SHEET UTV-1 AND UTV-2 IS A TRUE, ACCURATE AND COMPLETED DEPICTION OF THE RESULTS OF A FIELD SURVEY PERFORMED UNDER MY DIRECTION AND COMPLETED ON FEBRAURY 28, 2020.									
SUBSURFACE UTILITY ENGINEERING NOTES: 1. OWNERSHIP IS BASED UPON OBSERVING VISIBLE ABOVE GROUND UTILITY FEATURES, SUNSHINE 811 DIG TICKET AND PROFESSIONAL JUDGEMENT. NO RECORDS RESEARCH WAS PERFORMED BY WGI, INC.									
SURVEYOR'S NOTES: 1. SURVEY WAS PERFORMED BY WGI, INC. 2. VERTICAL INFORMATION IS RELATIVE TO NORTH AMERICAN VERTICAL DATUM (NAVD) 88. 3. BEARINGS AND COORDINATES ARE RELATIVE TO THE STATE PLANE COORDINATES FLORIDA WEST ZONE, NORTH AMERICAN DATUM (NAD) 1983, ADJUSTMENT 1990. 4. STATION AND OFFSET FROM BASELINE SURVEY OF TWIGGS AVENUE AS PROVIDED BY FDOT PROJECT NETWORK CONTROL (PNC) FINANCIAL PROJECT ID N/A. 5. PROJECT UNITS: U.S. SURVEY FEET. 6. THE SPECIFIC PURPOSE OF SURVEY IS TO DETERMINE THE HORIZONTAL AND VERTICAL LOCATION OF VACUUM TEST HOLES AS MARKED ON THE SURFACE BY THE SUBSURFACE UTILITY ENGINEERING DEPARTMENT OF WGI, INC.									
REVISIONS				TAMPA HILLSBOROUGH EXPRESSWAY AUTHORITY			VERIFIED UTILITY LOCATE SHEET (1)		SHEET NO.
DATE	DESCRIPTION	DATE	DESCRIPTION						
				ROAD NO.	COUNTY	FINANCIAL PROJECT ID			
			JAY SCAGLIOLA, PSM SURVEYOR LICENSE NUMBER 5066 WGI INC. 2035 VISTA PARKWAY, SUITE 100 WEST PALM BEACH, FL 33411 CERTIFICATE OF AUTHORIZATION No. 7055	TWIGGS	HILLSBOROUGH	O-00419		UTV-1	

THE OFFICIAL RECORD OF THIS SHEET IS THE ELECTRONIC FILE DIGITALLY SIGNED AND SEALED UNDER RULE 5J-17.062, F.A.C.

VERIFIED UTILITY LOCATE SHEET

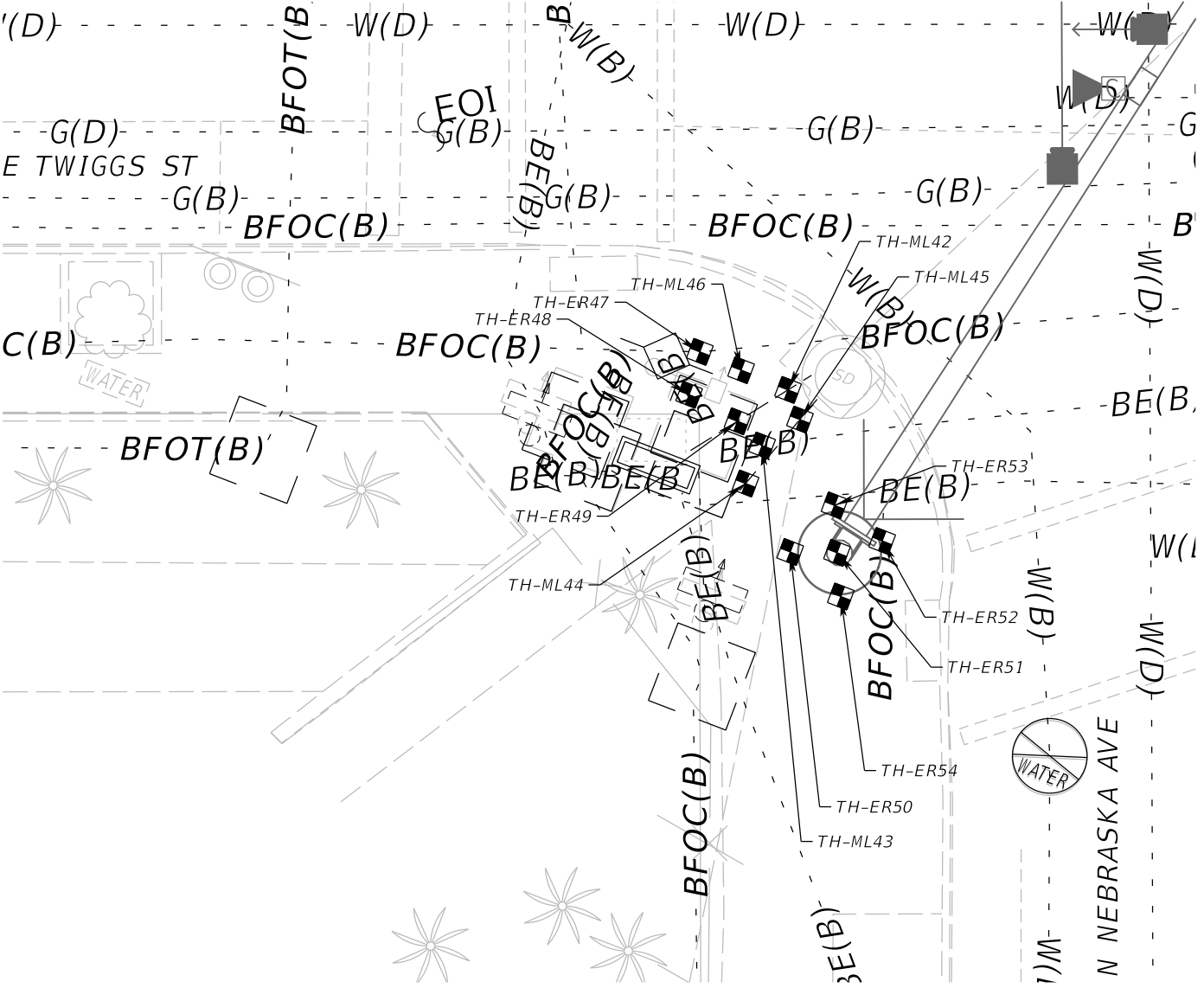
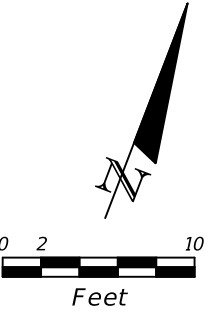
[illegible]

REVISIONS				JAY SCAGLIOLA, PSM SURVEYOR LICENSE NUMBER 5066 WGI INC. 2035 VISTA PARKWAY, SUITE 100 WEST PALM BEACH, FL 33411 CERTIFICATE OF AUTHORIZATION No. 7055	TAMPA HILLSBOROUGH EXPRESSWAY AUTHORITY			<p style="text-align: center;"><i>VERIFIED UTILITY LOCATE SHEET (2)</i></p>	SHEET NO.
DATE	DESCRIPTION	DATE	DESCRIPTION		ROAD NO.	COUNTY	FINANCIAL PROJECT ID		UTV-2
					TWIGGS	HILLSBOROUGH	O-00419		



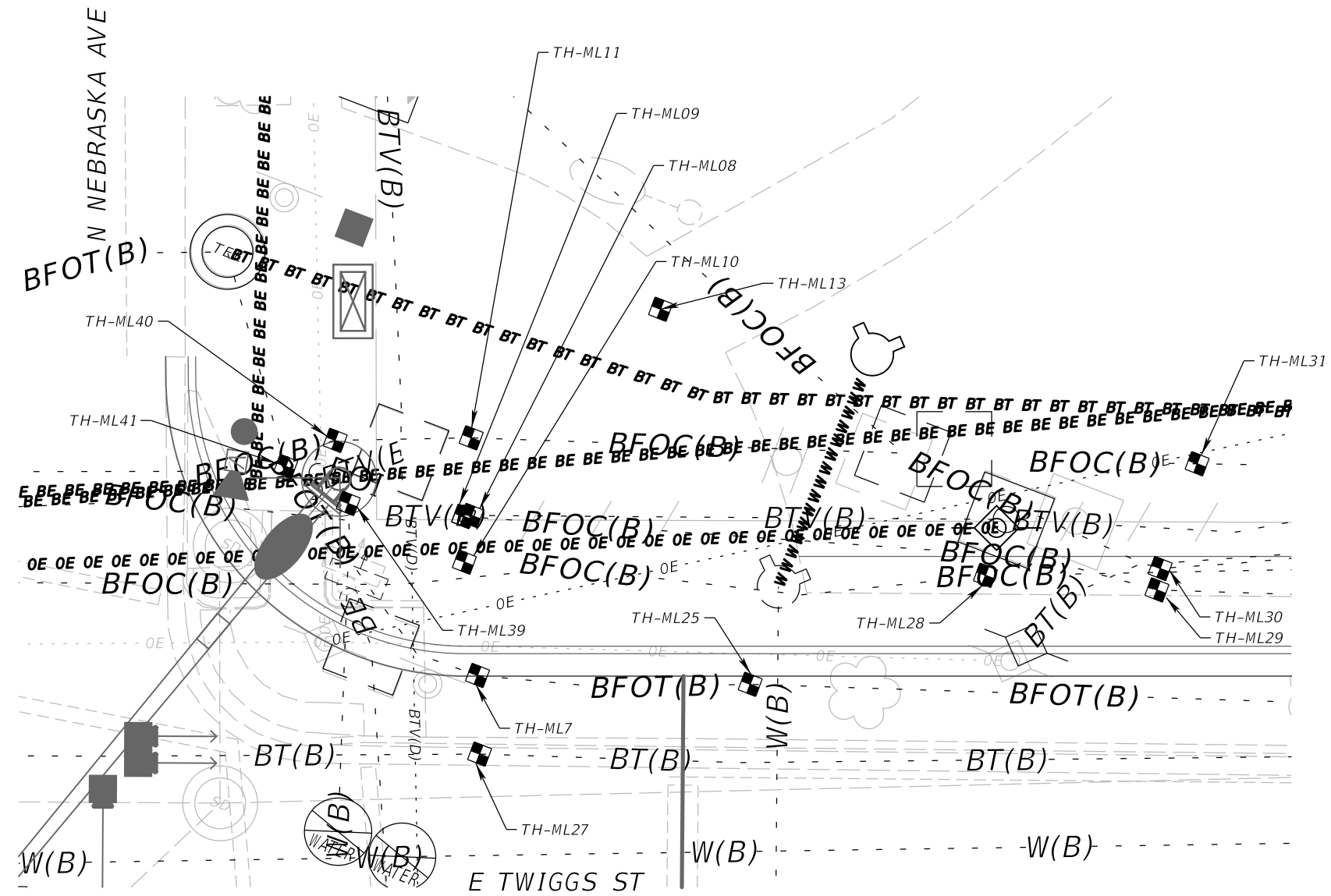
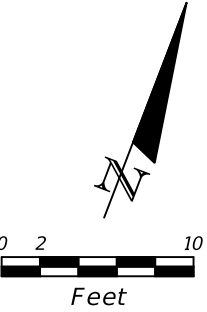
REVISIONS				MEGAN M. TETRO, P.E. FLORIDA PE NO. 76120 WANTMAN GROUP, INC. 3111 W. MARTIN LUTHER KING JR. BLVD., SUITE 375, TAMPA, FL 33607 CERTIFICATE OF AUTHORIZATION NO. 6091	TAMPA HILLSBOROUGH EXPRESSWAY AUTHORITY			UTILITY ADJUSTMENT (1)	SHEET NO. 4
DATE	DESCRIPTION	DATE	DESCRIPTION		ROAD	COUNTY	CONTRACT NO.		
					TWIGGS	HILLSBOROUGH	000419		

THE OFFICIAL RECORD OF THIS SHEET IS THE ELECTRONIC FILE DIGITALLY SIGNED AND SEALED UNDER RULE 61G15-23.004, F.A.C.



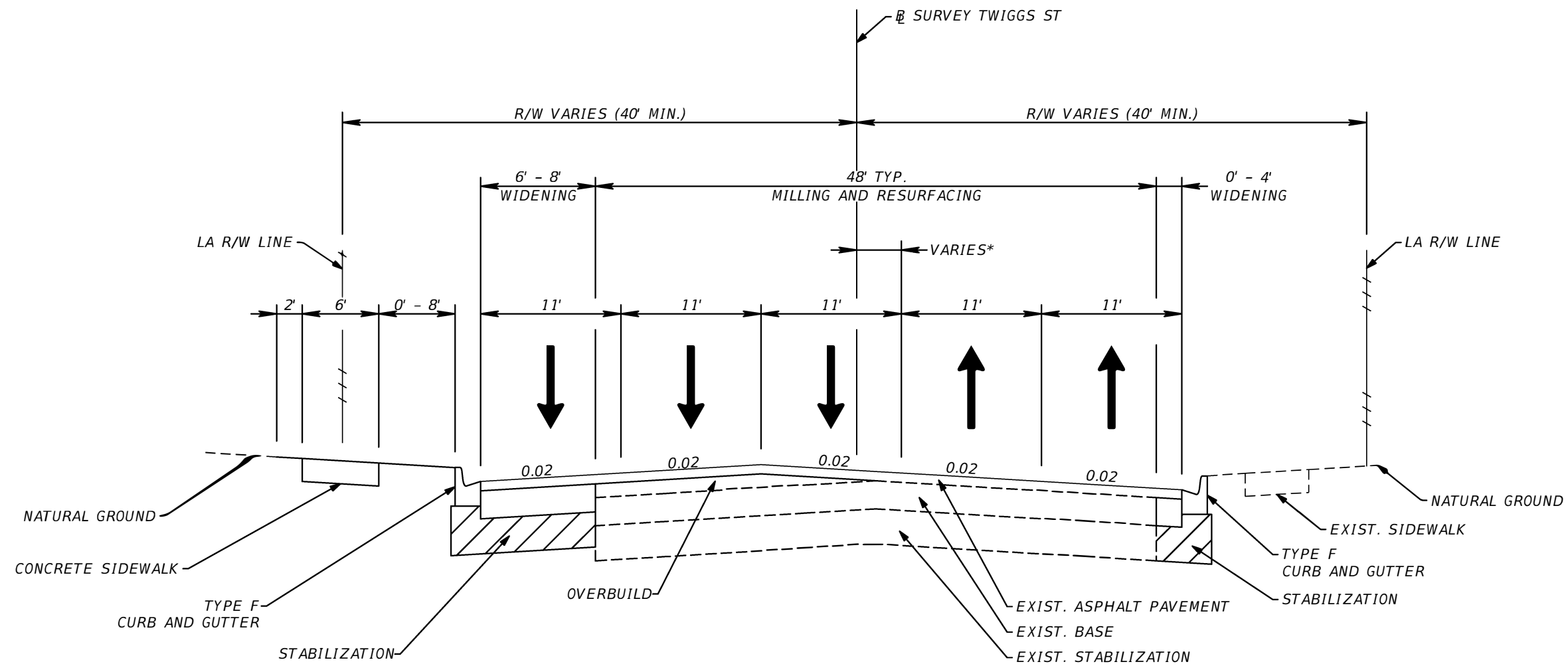
REVISIONS				MEGAN M. TETRO, P.E. FLORIDA PE NO. 76120 WANTMAN GROUP, INC. 3111 W. MARTIN LUTHER KING JR. BLVD., SUITE 375, TAMPA, FL 33607 CERTIFICATE OF AUTHORIZATION NO. 6091	TAMPA HILLSBOROUGH EXPRESSWAY AUTHORITY			UTILITY ADJUSTMENT (3)	SHEET NO.
DATE	DESCRIPTION	DATE	DESCRIPTION		ROAD	COUNTY	CONTRACT NO.		
					TWIGGS	HILLSBOROUGH	000419		6

THE OFFICIAL RECORD OF THIS SHEET IS THE ELECTRONIC FILE DIGITALLY SIGNED AND SEALED UNDER RULE 61G15-23.004, F.A.C.



REVISIONS				MEGAN M. TETRO, P.E. FLORIDA PE NO. 76120 WANTMAN GROUP, INC. 3111 W. MARTIN LUTHER KING JR. BLVD., SUITE 375, TAMPA, FL 33607 CERTIFICATE OF AUTHORIZATION NO. 6091	TAMPA HILLSBOROUGH EXPRESSWAY AUTHORITY			UTILITY ADJUSTMENT (4)	SHEET NO.
DATE	DESCRIPTION	DATE	DESCRIPTION		ROAD	COUNTY	CONTRACT NO.		
					TWIGGS	HILLSBOROUGH	000419		7

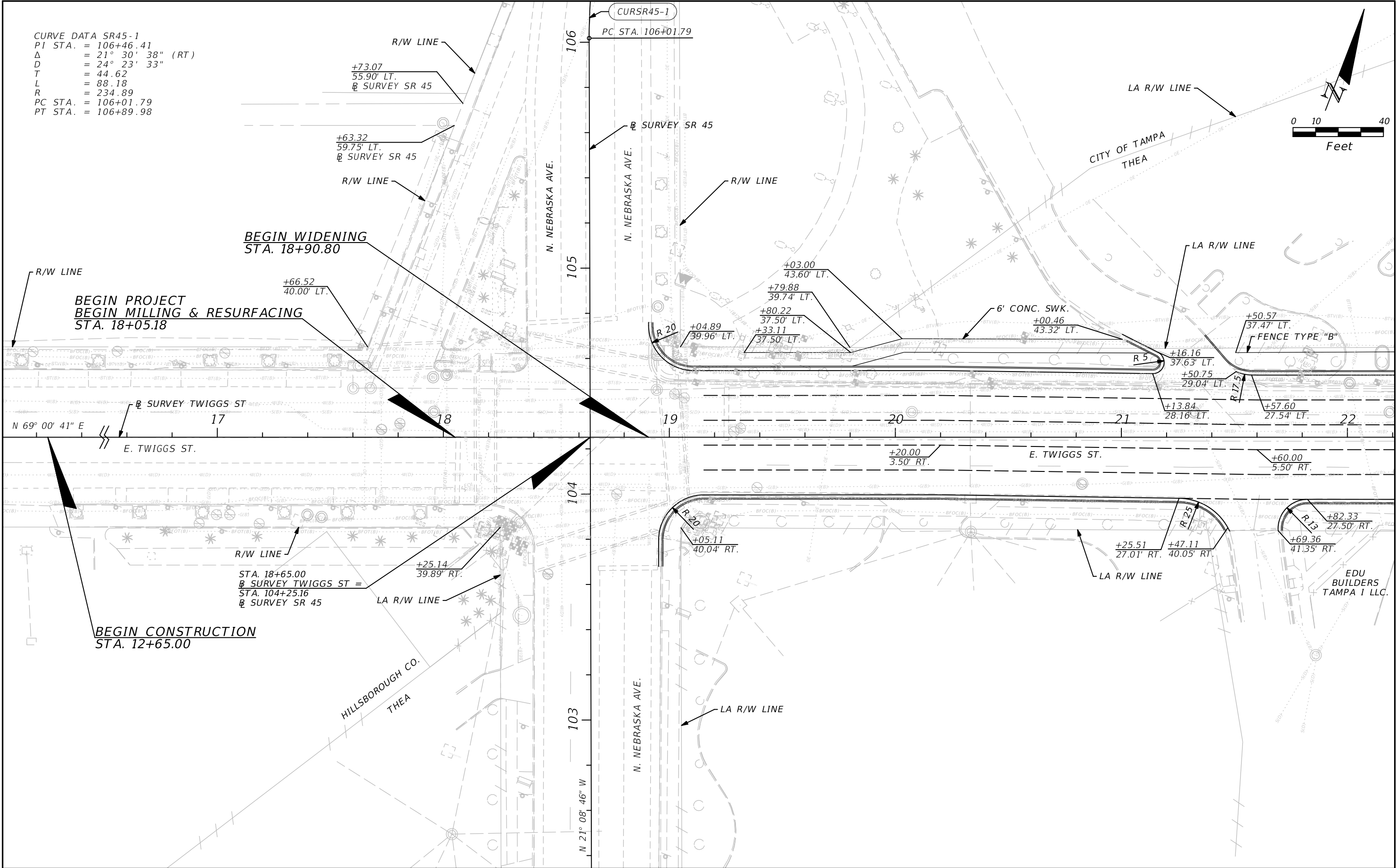
THE OFFICIAL RECORD OF THIS SHEET IS THE ELECTRONIC FILE DIGITALLY SIGNED AND SEALED UNDER RULE 61G15-23.004, F.A.C.



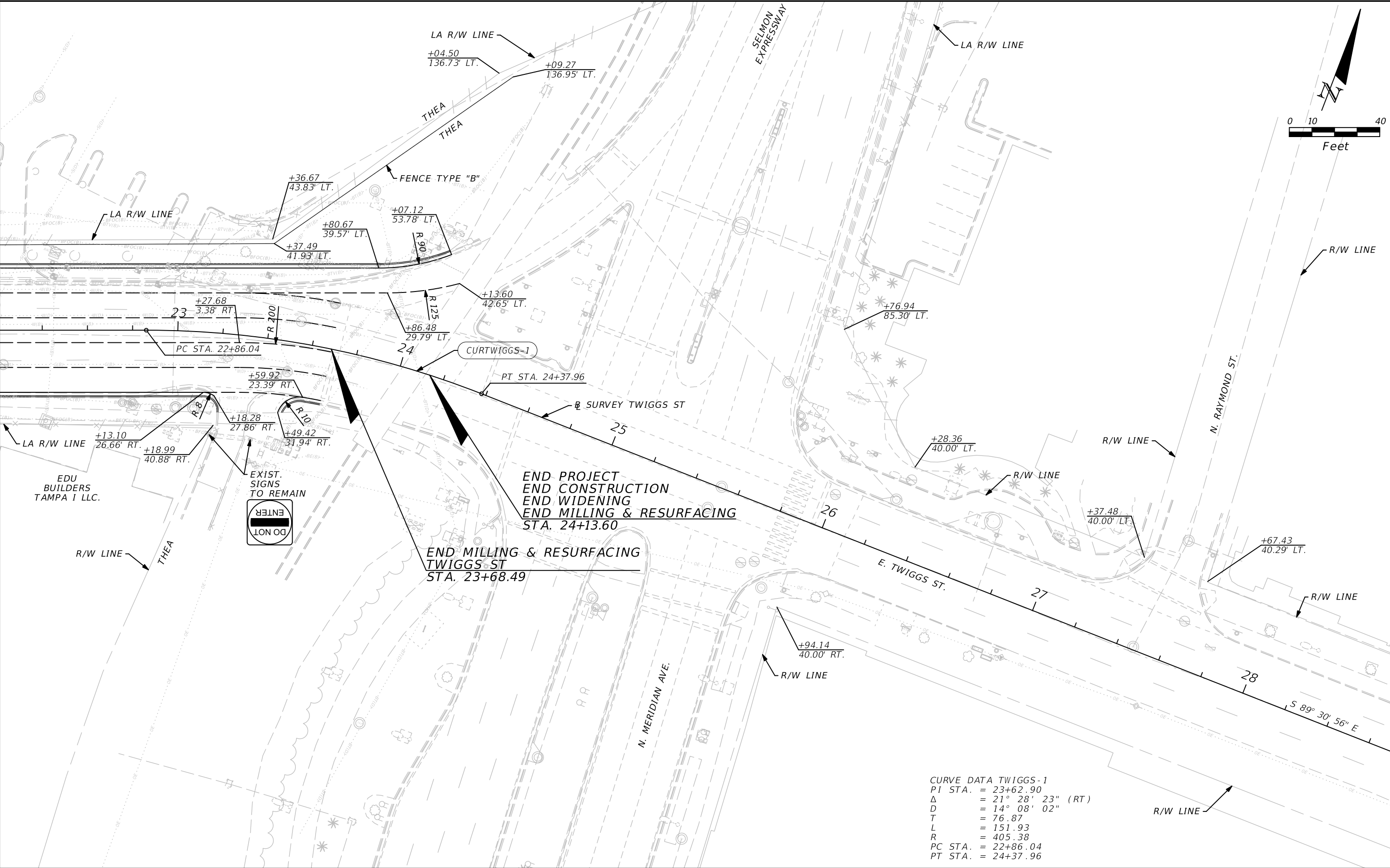
**TYPICAL SECTION
E. TWIGGS STREET
STA. 18+90.80 TO STA. 24+13.60**

* 3.5' FROM STA. 19+13.65 TO 20+20.00
5.5' FROM STA. 21+60.00 TO 22+86.04
SEE CROSS SECTIONS FOR REMAINING STA. AND TRANSITIONS

REVISIONS				FOR INFORMATION ONLY	TAMPA HILLSBOROUGH EXPRESSWAY AUTHORITY			TYPICAL SECTION	SHEET NO.
DATE	DESCRIPTION	DATE	DESCRIPTION		ROAD NO.	COUNTY	FINANCIAL PROJECT ID		
					TWIGGS	HILLSBOROUGH	000419		



REVISIONS				FOR INFORMATION ONLY	TAMPA HILLSBOROUGH EXPRESSWAY AUTHORITY			ROADWAY PLAN (1)	SHEET NO.
DATE	DESCRIPTION	DATE	DESCRIPTION		ROAD NO.	COUNTY	FINANCIAL PROJECT ID		
					TWIGGS	HILLSBOROUGH	000419		



REVISIONS				FOR INFORMATION ONLY	TAMPA HILLSBOROUGH EXPRESSWAY AUTHORITY			ROADWAY PLAN (2)	SHEET NO.
DATE	DESCRIPTION	DATE	DESCRIPTION		ROAD NO.	COUNTY	FINANCIAL PROJECT ID		
					TWIGGS	HILLSBOROUGH	000419		